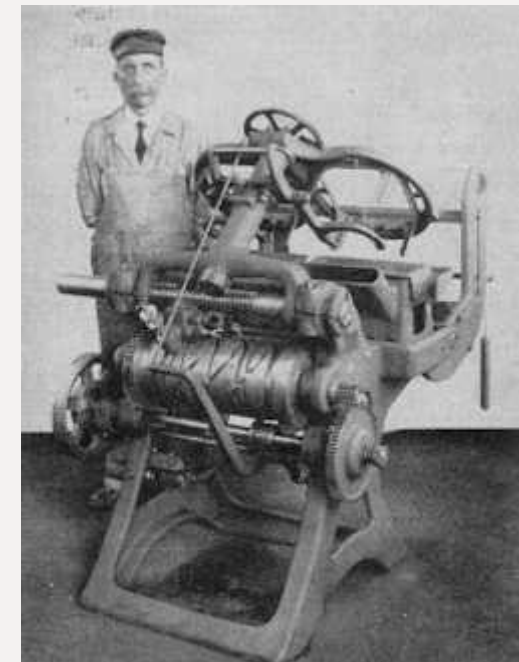


# The History of Canmaking and Problems Solved Along the Way



**PRIME  
CONTROLS**  
*Metal Sensing Solutions*

# The Origin of the Can

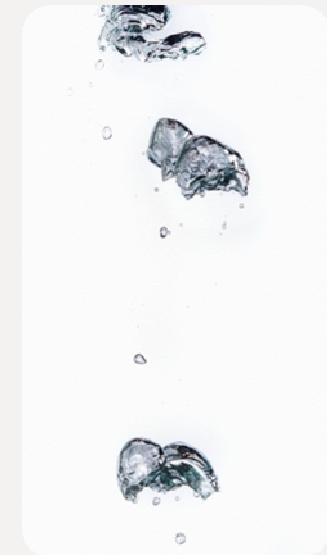
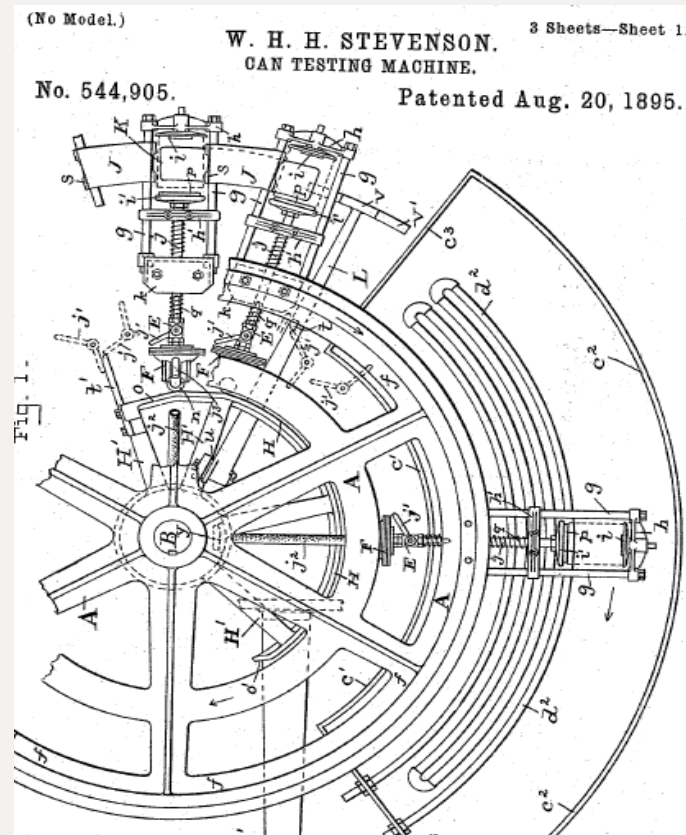
- 1810 Peter Durand



**PRIME**  
**CONTROLS**  
*Metal Sensing Solutions*

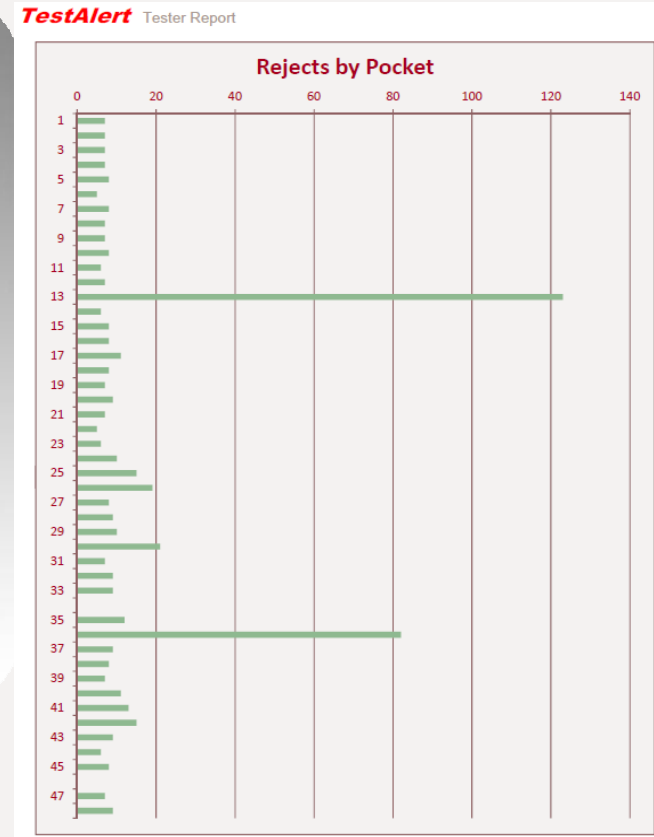
# Early Can Leak Testing

- 1895 William Stevenson



**PRIME**  
**CONTROLS**  
Metal Sensing Solutions

# Modern Leak Tester Systems



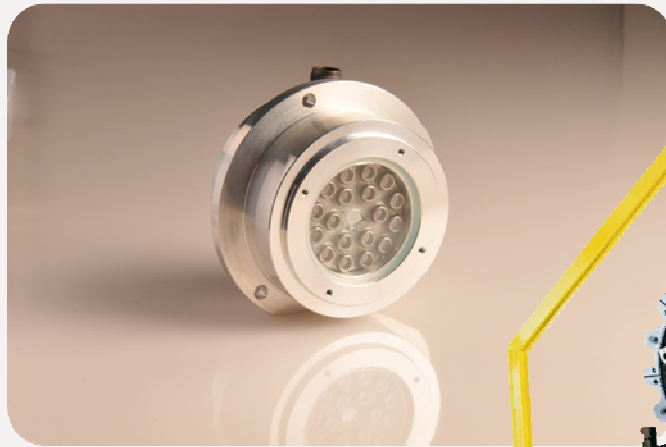
**PRIME**  
**CONTROLS**  
Metal Sensing Solutions



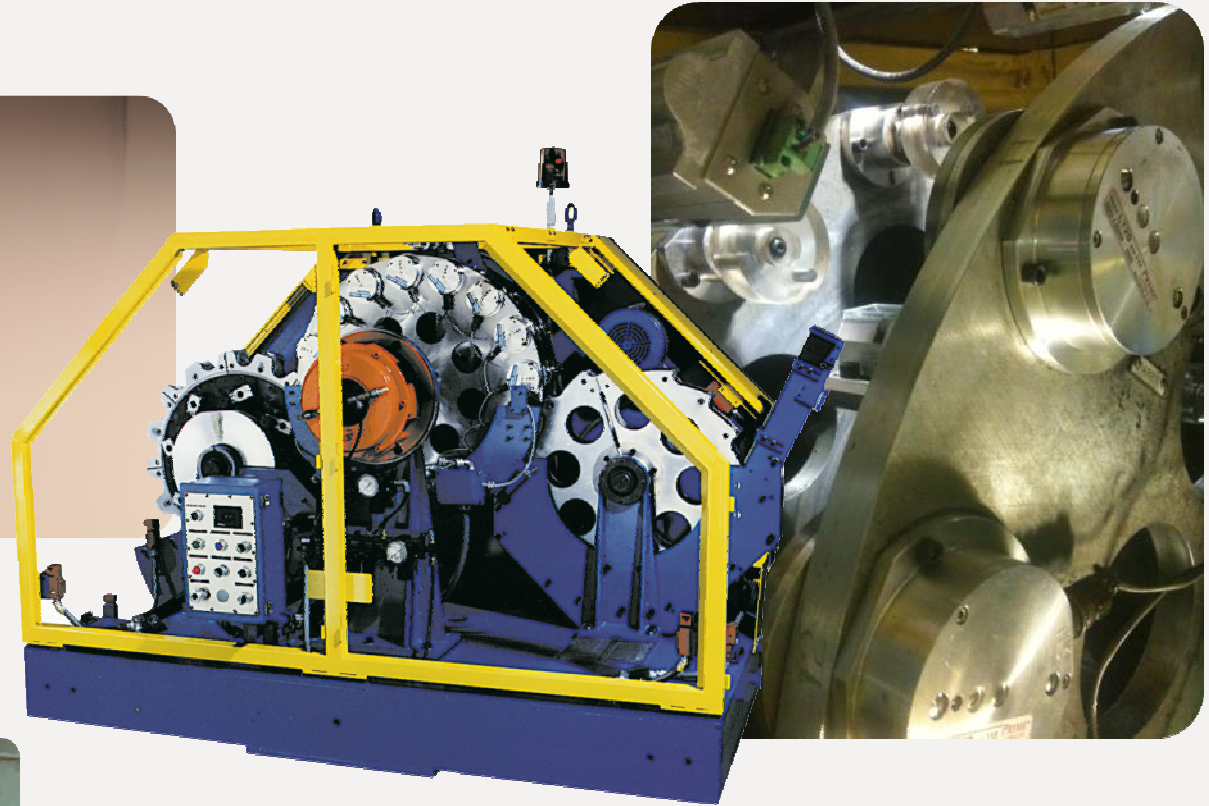
# Light Tester for Can Bodies

For Randolph Light Testers

Model LT20



Detects Pin Holes



**PRIME  
CONTROLS**  
*Metal Sensing Solutions*

# Light Tester for Can Bodies

## IllumiLED – TL102

- Replaces Halogen bulbs
- Significant power and maintenance savings



## RI101

- Replaces obsolete reset bulb with LED



**PRIME**  
**CONTROLS**  
*Metal Sensing Solutions*

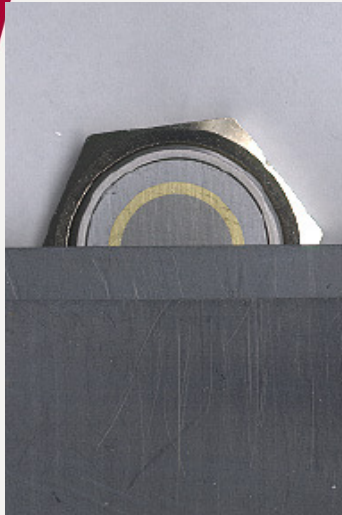
# The Origin of the Can

- 1846 Henry Evans



**PRIME**  
**CONTROLS**  
*Metal Sensing Solutions*

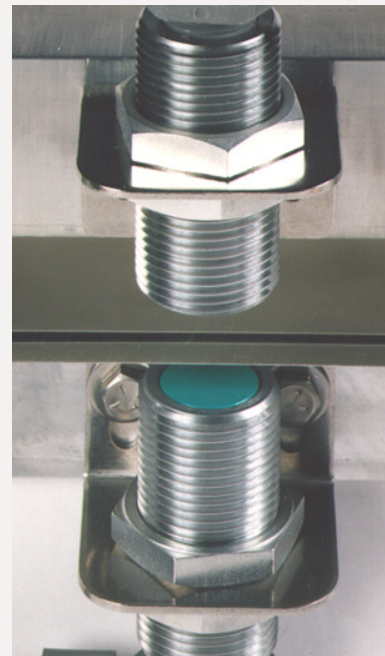
# Wide Range of Sensors & Controls to Solve All Types of Quality Needs



- **Single Probe**
- **Contact**
- For Steel & Tinplate
- Detect Doubles from one side.



- **Single Probe**
- **Non-Contact**
- For Steel & Tinplate
- Ideally used on a magnetic conveyer transporting can ends.



- **Dual Probe**
- **Non-Contact**
- For All Metals
- Very Thin to Very Thick Metals
- For sheet transfer



- **Smart Sensors with Built in Memory! NEW!**
- **Contact**
- For Steel & Tinplate
- Single Probe Contact
- Great for Pick & Place Applications

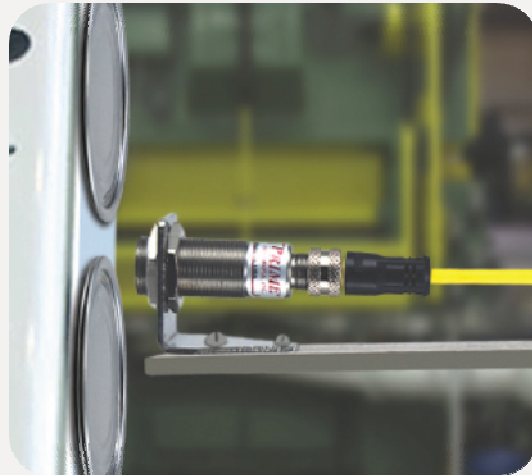
**PRIME**  
**CONTROLS**  
*Metal Sensing Solutions*



# Double Shell Detection- Steel

## Model DS70 Fluximity

–Single Probe, Non Contact detects double ends by using the magnetic field of the conveyor, or external magnet.



**PRIME**  
**CONTROLS**  
*Metal Sensing Solutions*

# Customer Story

## The Double Dome Dilemma

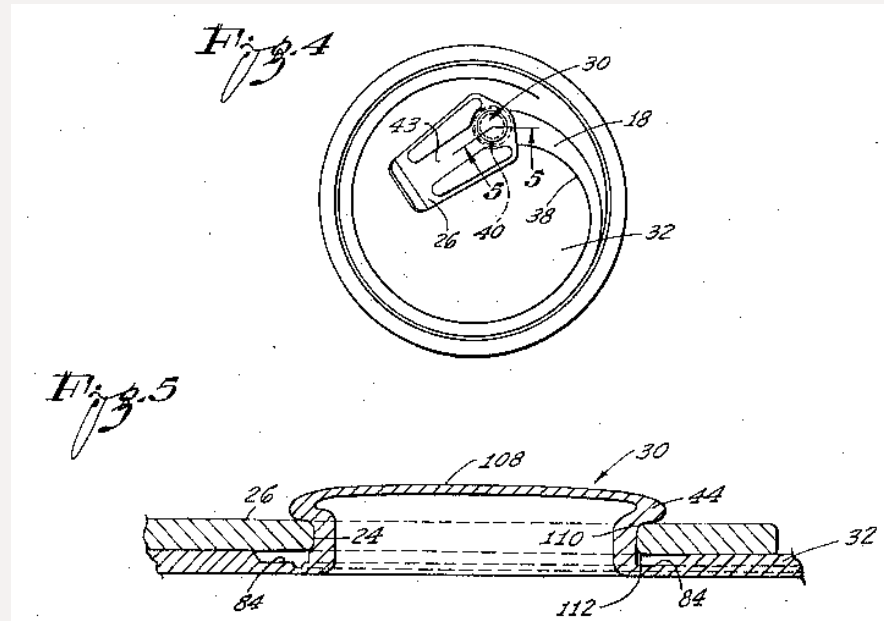


**PRIME**  
**CONTROLS**  
*Metal Sensing Solutions*



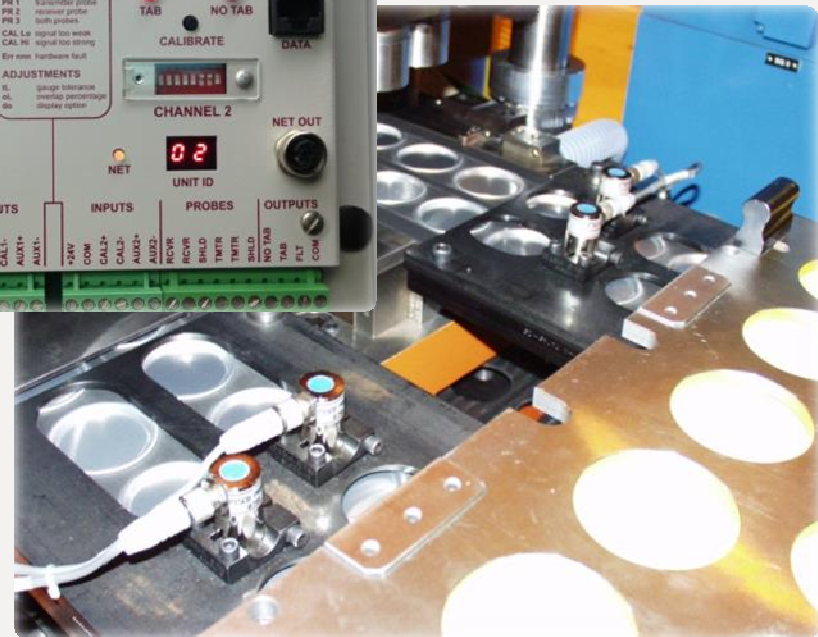
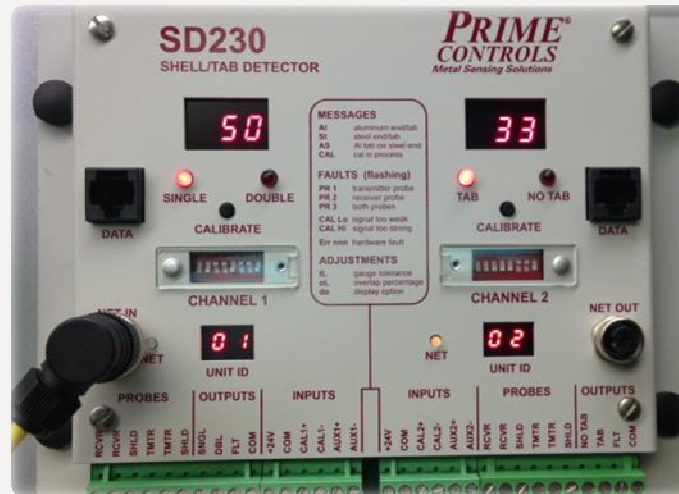
# The Importance of the Tab

- 1963 Ernie Frazee



**PRIME**  
**CONTROLS**  
Metal Sensing Solutions

# The Importance of the Tab



SD230  
Double Shell / Missing Tab Detector

**PRIME**  
**CONTROLS**  
*Metal Sensing Solutions*

# The Importance of the Tab

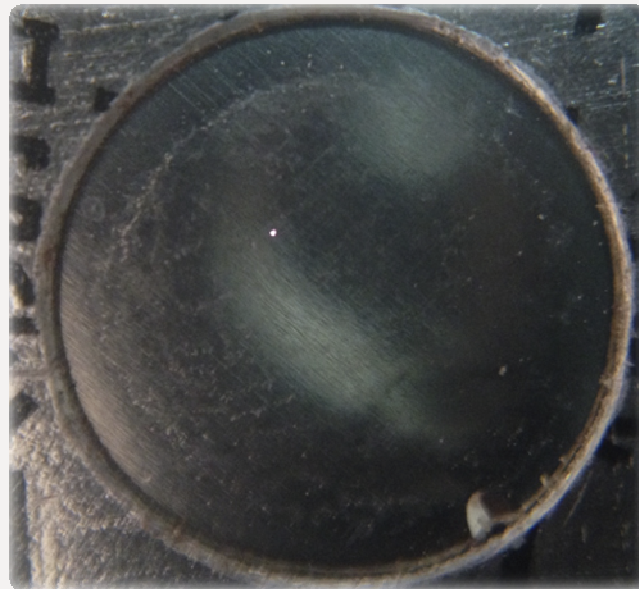
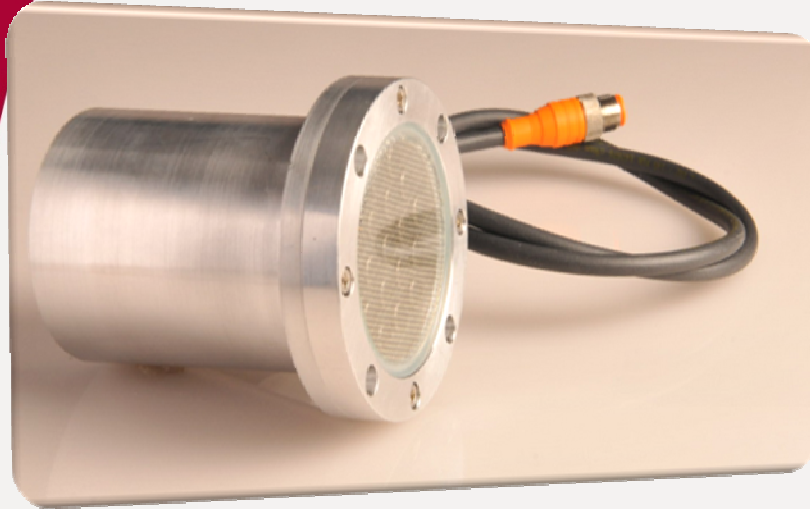
## ET230 – ETHERNET IP GATEWAY

- Allows for communication between PLC and SD230 control.
- Gives user access to a wealth of data
  - Output status
  - Profile of shell
  - Current readings
  - Fault Conditions



**PRIME  
CONTROLS**  
*Metal Sensing Solutions*

# Light Testing of Ends



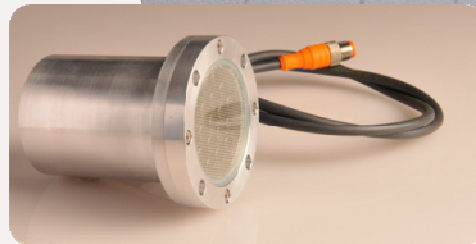
**PRIME  
CONTROLS**  
*Metal Sensing Solutions*





THE WORLD'S SUPPLIER OF  
DOUBLE SHELL & MISSING TAB DETECTORS  
FOR HIGH-SPEED, EASY-OPEN END  
MANUFACTURING LINES

[> click to learn more](#)



**PRIME  
CONTROLS**  
*Metal Sensing Solutions*

# The FUTURE?????



***PRIME***  
***CONTROLS***  
*Metal Sensing Solutions*



# CAN MAKING



***PRIME***  
***CONTROLS***  
*Metal Sensing Solutions*

# Thank You

## WORLD HEADQUARTERS

## Dayton, Ohio, USA

Phone: +1 (937) 435-8659

[vip@primecontrols.com](mailto:vip@primecontrols.com)

[www.primecontrols.com](http://www.primecontrols.com)

***PRIME  
CONTROLS***  
*Metal Sensing Solutions*